

KYEM Administrative Branch FY2011 Annual Report

The KYEM Administrative Branch is located at 100 Airport Road, Frankfort, Kentucky and is housed in the KHEAA Building. Several sections make up this branch: Budget and Control, Hazard Mitigation, KYEM Personnel, Recovery and Resource Management.

During fiscal year ending June 30, 2011, the KYEM Administrative Branch accomplished many tasks to include training and updating resource management for the NLE. We continue to enhance our Sub-recipient Monitoring Program and improve on Division processes for budget tracking, training and travel events and overall policy and procedures. The Branch is always in motion coordinating activities to meet the requirements for the Governor's Emergency Management Workshop, Weather Workshop, Kentucky Emergency Services Conference (KESC), disaster closeouts, contracting and many other events within the areas of administration, budget, personnel, fiscal and grants management.

Resource Management (RM) - By attending multiple exercises, training events and discussing lessons learned during prior activations, the Administrative Branch has been able to continually update the RM Standard Operating Procedures (SOP). We worked to prepare for the NLE and continue to make improvements on how RM responds to a disaster or catastrophic event. We have incorporated spreadsheets into the process to identify what vendors to use by commodity and those on state contract. We have also updated checklists, disaster and process flow matrixes for exact instructions and established pre-determined EMAC and ARF missions. The generation of these tools allows us to assist the citizens of the Commonwealth with resources faster and more efficiently.

Sub-recipient Monitoring Program - We have established procedures for site visits that allow us to review all 120 counties every year. We have created checklists that capture the same information regardless of the reviewer or interviewee. The checklist has created consistency throughout the state and helps identify counties with weaker financial controls and help ensure compliance with state and federal regulations.

Events and Workshops – The Administrative Branch is responsible for budgeting, registration and vendor support for all events and workshops.

Grant Closeout Team – We have implemented a strategy to track closeout dates with the intent to close projects within 90 days of the project closing. This will allow us to move disasters off the books faster and cut our current file storage needs in half.

Policies and Procedures - The Administrative Branch is committed to providing the administrative infrastructure to support the pursuit of excellence throughout KYEM and the Commonwealth of Kentucky by providing world class customer service. We have accomplished this by updating and creating new policies and procedures that are enforced daily. Some of these processes include how we

do contracts, process payments, deposit checks, travel, attend training events, participate in exercises and overall how the Administrative Branch does business.

Budget Tracking – The Administrative Branch successfully tracks and manages 15-20 different funding streams. Our goal is to have each Division grant managed effectively. We have implemented budget meetings and procedures to ensure each program knows the status of their program funds and that each program is in compliance

RECOVERY BRANCH

Disaster Events

During the fiscal year ending June 30, 2011, the Commonwealth experienced three (3) disaster events, of which two (2) received Presidential Declarations before June 30, 2011. The third disaster event received a Presidential declaration after the close of fiscal year 2011.

DR-1925 Beginning on July 17, 2010, and continuing through July 30, 2010, severe storms, flooding and mudslides impacted the Commonwealth. The counties of Carter, Elliott, Lewis, Madison, Pike and Shelby were declared eligible for Public Assistance. Public Assistance was granted to 32 governmental and non-profit applicants with projects valued at approximately \$11.5 million. Individual and Households Assistance was declared for Carter, Elliott, Lewis, Mason, Pike and Rowan counties. Over 1,600 applicants received more than \$10.5 million dollars in Individual Assistance from FEMA and more than \$6.2 million in loans from the Small Business Administration.



Pike County Flooding

July 2010

DR - 1976 On April 12, 2011 through May 20, 2011, severe storms, tornadoes, and widespread flooding occurred throughout much of the Commonwealth. On May 4, 2011, a Presidential declaration was received, which ultimately provided Public Assistance for seventy-six (76) counties and Individual Assistance (IA) for 22 counties, as well as hazard mitigation grant funding opportunities for the entire state. Damages sustained by over 172 governmental and non-profit applicants are estimated to result in 1,372 Public Assistance (PA) projects with an approximate value of \$26.4 million. Individual Assistance from FEMA in excess of \$8.7 million was distributed to more than 1,000 affected individuals and households. Additionally, the Small Business Administration extended almost \$4 million in disaster loans to individuals and businesses.

DR - 4008 During the period of June 19-23, 2011, severe storms, tornadoes and flooding occurred in the counties of Bell, Breathitt, Knott, Knox, Lee, Magoffin and Perry. This event was granted a Presidential declaration after the reporting period and on July 25, 2011, allowed only for PA in these counties, resulting in an estimated value of over \$6 million for approximately 25 governmental and non-profit entities. After extensive assessments and research, the Recovery Branch compiled requests from Governor Beshear to the President for Individual Assistance for the counties of Bell, Breathitt, Knott, Lee, and Perry. Approximately 400 individuals and households and over 75 businesses sustained significant flood damages. IA was later awarded for Bell, Knott and Perry Counties.

Mitigation Program

As a result of two new disaster declarations (DR-1925 and DR-1976) in fiscal year 2011, FEMA committed an additional \$13.8 million in hazard mitigation funding for projects to reduce the long-term effects of future disasters.

On December 29, 2010, FEMA approved the Commonwealth's updated State Hazard Mitigation Plan and continued Kentucky's designation as an "Enhanced" Mitigation Program. This status increases declaration-related mitigation grant funding from the typical 15% of the value of disaster damages awarded to non-enhanced state programs to 20% for Kentucky's Hazard Mitigation Grant Program.

The development of the Commonwealth Hazard Assessment and Mitigation Planning System (CHAMPS) was completed and the first testing Phase began in July 2011 to identify any needed functionality adjustments. Design of CHAMPS Phase II, which focuses on community risk analysis and disaster response and recovery, began in August 2011, and has an expected delivery date of July 1, 2012.

Public Assistance Program

During FY 2011, the Public Assistance Program (PA) received two major disaster declarations (DR 1925 and 1976). The estimated damage of the disaster event for this fiscal year totaled \$38,022,691 with approximately 204 applicants and over 2,200 projects.

Implementation of the Public Assistance Grant Management System (GMS) began in April 2011, for the Presidential Disaster DR 1976. This web-based application tracks all projects within the declared event and interfaces with the Commonwealth's financial management system.

During fiscal year 2011, the Public Assistance Program disbursed \$41,729,495.14 in federal and state funding to eligible governmental units and private non-profit applicant entities for recovery costs associated with all open disasters.

Individual Assistance

As a result of Disaster -1925, which was declared on July 23, 2010, Individuals and Households Assistance was extended to applicants in Carter, Elliott, Lewis, Mason, Pike and Rowan counties. Over 1,600 applicants received more than \$10.5 million dollars in Individual Assistance from FEMA and more than \$6.2 million in loans from the Small Business Administration.

Disaster - 1976, declared on May 4, 2011, resulted in FEMA Individuals and Households Assistance in excess of \$8.7 million which was distributed to more than 1,000 to affected individuals and households. Additionally, the Small Business Administration extended almost \$4 million in disaster loans to individuals and businesses as a result of this disaster event.

Volunteer Services

In fiscal year 2011, the Recovery Branch volunteer services program engaged volunteer organizations in disaster responses and assisted with the development of local Voluntary Organizations Active in Disaster (VOAD). Volunteer groups were coordinated to respond to Disasters 1925 and 1976 as well as undeclared disaster events in six additional counties. Long Term Recovery Committees were formed in Pike, Carter, McCracken and Livingston Counties. The Louisville Long Term Recovery group finished their work from DR-1855 (declared August 14, 2009) during fiscal year 2011.

Local VOADs were formed in the Barren River Area Development District, Daviess County and Madison County. The KYEM Recovery Branch Volunteer Coordinator assisted the Kentucky VOAD with its first statewide training conference and also consulted with Norton Healthcare System as it offered the Disaster Preparedness for Faith Communities Conference. A two day training event for Long Term Recovery Committees, conducted by national experts from World Church Service, was arranged by the KYEM Recovery Branch Volunteer Coordinator.



Kentucky VOAD played a key role in bringing Tide's Loads of Hope to assist in the Pike County flooding recovery efforts

Recovery Branch Outreach

The Recovery Branch completed numerous training sessions on topics such as Damage Assessments, the Public Assistance Process, Individual Assistance, VOAD, and 404/406 Hazard Mitigation programs. The training was designed to ensure potential applicants of the Commonwealth are positioned to maximize resources and funding available through FEMA programs. The Recovery Branch conducted numerous Applicant Briefings across the Commonwealth in conjunction with the disaster declarations.

The Recovery Branch has begun development of an Applicant Agent certification curriculum. The curriculum will be implemented during the next fiscal year and will provide attendees with a comprehensive understanding of the disaster declaration process and maximization of all recovery opportunities.

KYEM Operations Branch

KYEM Operations Branch consists of:

Commonwealth Emergency Operations Center

Regional Resource Manager Offices

Planning Branch

Training and Exercise Branch

Kentucky Earthquake preparedness program

Chemical Stockpile Emergency Preparedness program



KYEM's Commonwealth Emergency Operations Center

The CEOC is operated at five named levels, Level One being the lowest level maintaining state and national situational awareness through the Commonwealth Emergency Information Center (CEIC) and is staffed by KYEM and KYNG Duty Officers 24/7 year round. Level Five is fully engaged during emergencies or declared disasters and fully occupied by State, Federal and outside partners.

The CEIC logged 4,901 incidents during the reporting period.

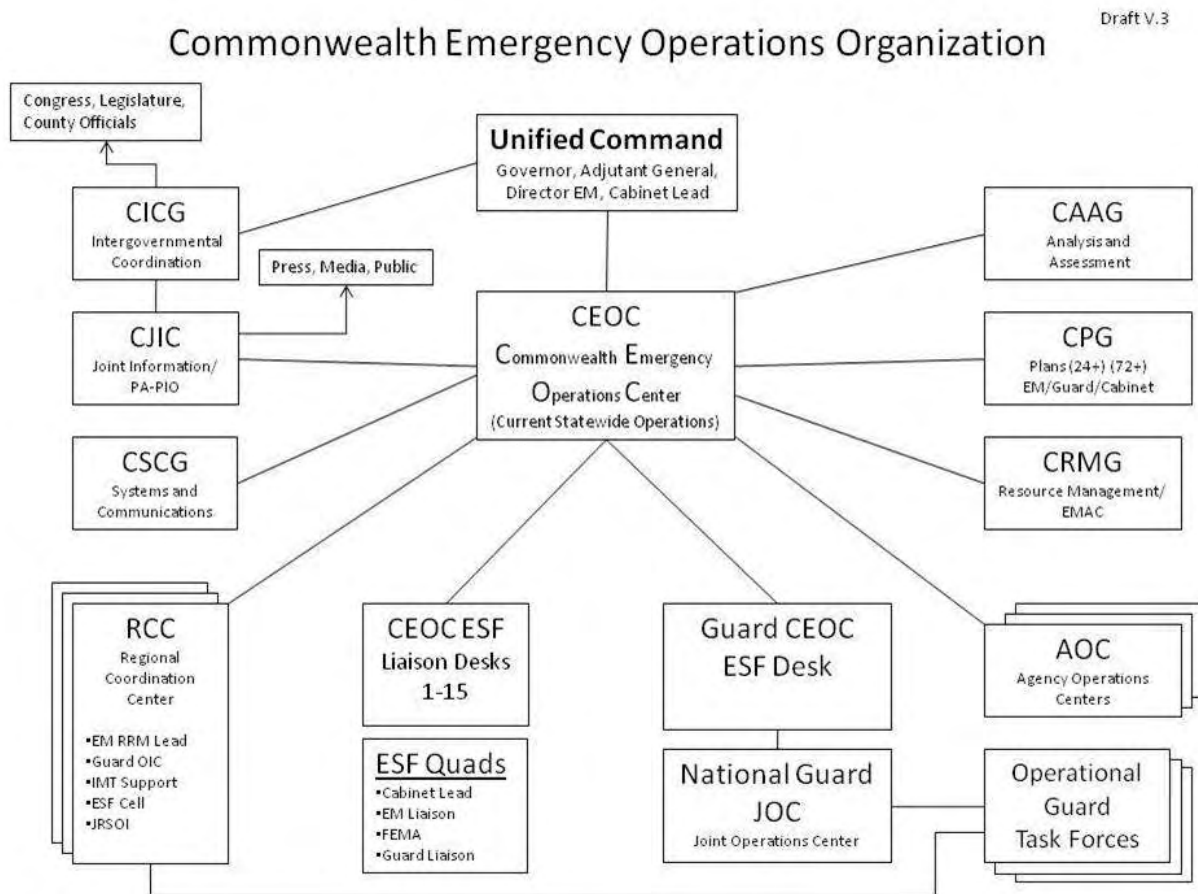


Maj. General Richard L. Frymire Emergency Operation Center, Frankfort, KY

Commonwealth Emergency Operations Groups

Consisting of the Commonwealth Analysis and Assessment Group, Commonwealth Planning Group, Commonwealth Resource Management Group, Commonwealth Systems and Communications Group, Commonwealth Joint Information Committee and Commonwealth Intergovernmental Coordination Group, these groups work independently in an integrated matter to ensure the needs of the Commonwealth are secure. This structure is designed to ensure response capabilities of the Commonwealth meet the needs of its citizens.

C Groups



Regional Response Offices

KYEM has 11 administrative regions which have the responsibility to carry out the coordination of information and resources within the region and between the state and regional levels to ensure effective and efficient support to local response. The Regions serve as the conduit for local and regional perspective and provide a physical presence for KYEM functions at the local level in all phases of emergency management. Each region has a regional response office, manager and administrative support staff. There is a direct link to each office and regional manager on the KYEM website:

<https://cms.kyem.ky.gov/about/regionalresponseoffices.htm>

Commonwealth Emergency Information/Intelligence Center (CEIC)

The CEIC is located adjoining the CEOC and serves as the warning point for Kentucky and serves as the intelligence gathering center for statewide emergency management.

The CEIC is manned 24/7 by both KYEM and KyNG staff taking calls from partnering agencies, emergency management across the state, local officials and the general public; then digesting and disseminating the information appropriately.



Total incidents opened by the CEIC

Incidents 07/01/10 through
06/30/11 = 4,901

Incidents by Region

- REGION 1 – 592
- REGION 2 - 358
- REGION 3 - 443
- REGION 4 - 557
- REGION 5 - 406
- REGION 6 - 458
- REGION 7 – 358
- REGION 8 - 435
- REGION 9 - 453
- REGION 10 - 294
- REGION 11 – 547

Operations Planning and Preparedness Branch

Mission Statement

The mission of the Planning and Preparedness Branch is to establish and support a comprehensive emergency planning and preparedness effort through the implementation of specific programs targeted at maintaining and improving the planning capabilities, management skills and technical knowledge of emergency management professionals, while building natural and technical hazard awareness in citizens, local governments, and businesses through programs established at the State, County and Local levels.

Workforce

The Planning Branch consists of:

Branch Manager x 1

Section Managers x 2

CSEPP Planner and Geographic Information Systems Technician x 1

County Emergency Planner x 1

CAMEO Technician x 1

ITEAMS/ Tier II Program Coordinator x 1

Local Emergency Planning Committee Program Coordinator x 1

Emergency Management Assistance Program Coordinator x 1

Grant Property Accountability Program Manager x 1

Offices for the Branch are located at Capital Center Drive, Building 1025, Suite 101, Frankfort, Kentucky.

Operations Planning and Preparedness Branch

Significant Events

Future Planning Section

The Future Planning Section has over the last year has been heavily involved in the following planning efforts during the reporting period:

Commonwealth Emergency Operations Plan – Basic Plan and Emergency Support Function Plans (1-15) – Final versions of the Basic Plan, Emergency Support Functions have been finished and are currently under review for final signatures.

State Energy Assurance Plan – Finalized the State Energy Assurance Plan and has included this plan as a Support Plan.

State Long Term Recovery Council and Strategy – In coordination with the Department for Local Government (DLG), and the KYEM Recovery Branch – Mitigation, initiated and continues development of supporting software and documentation to fully integrate all levels of preparedness and recovery into the development of a Long Term Recovery Strategy for the Commonwealth. A grant planner has been hired by DLG to assist in the development of the supporting software, Council and Strategy.

World Equestrian Games (WEG) – Final plan was published and implemented during the WEG. Personnel from the section/branch staffed support positions in the Federal Joint Operations Center during the Games.

Commonwealth Emergency Response Commission (CERC) Legislation – Section personnel have continued to staff and manage the quarterly meetings of the CERC, guided the development of sub-committees, provided the lead and support staff for the Planning Sub-Committee of the CERC, worked with the Hazardous Materials Emergency Preparedness Grant coordinator to develop plans and proposals for the improvement of statewide hazardous materials response teams on programmatic and legislative levels.

Commonwealth Shelter Project: Successfully finished the input of commonwealth emergency shelters in the National Shelter System (NSS), coordinated training of 8 personnel in use of the NSS and have coordinated the development of an management process to insure database integrity.

Commonwealth Mass Care Workgroup: Initiated the Mass Care Workgroup consisting of emergency management, Cabinet for Health and Family Services, Kentucky Volunteer Organizations Active in Disasters, Kentucky Community Crisis Response Board (KCCRB) personnel which has developed policies and procedures for mass care functions identified in Emergency Support Function – 6. The Workgroup has also designed educational material to increase community awareness of mass care capabilities.

Pet Sheltering Program: Final Memorandum of Agreement has been signed with the American Humane Association which has established, for the first time, a fully capable response system for managing pets and animals during a catastrophic event within the Commonwealth. The team also produced an agreement with the Tri-State County Animal Response Team to support local disasters that do not require the larger agreement to be implemented.

Local Emergency Planning Committee (LEPC) Awareness Campaign: Developed and implemented, with the grant manager for the Hazardous Materials Emergency Preparedness Grant, a joint awareness campaign to improve the visibility of the County Local Emergency Planning Committees (LEPC). LEPC participated in the KY State Fair as part of the overall campaign. Developed a pocket information book on the LEPC program to be distributed to each LEPC as a method for imbedding information in the community and developed and beta tested an on-line process for submission of Tier II Hazardous Material Inventory Reports, which provided important information that will be used to fully deploy an automated system for collection of this data in the 2012/2013 calendar years.

New Madrid Seismic Zone Earthquake Planning in Western Kentucky – Conducted individual Active Planning sessions with 24 counties in Western Kentucky resulting in detailed action checklists for implementation of County Earthquake Response plans. These plans were utilized during the National Level Exercise 2011.

New Madrid Seismic Zone Earthquake Planning – State – Developed and published the Commonwealth NMSZ Response Plan guiding the response of the Commonwealth to a catastrophic earthquake impacting over 24 counties and 250,000 citizens. Developed, tested and documented catastrophic coordination and control systems and regional emergency support systems in conjunction with the National Level Exercise 2011.

I-75 Closure Due to a CSEPP Event – The I-75 Closure plan has been completed, published to Counties and is being prepared for exercise in the 2012 calendar year CSEPP exercise.

CSEPP Active Planning and Plan Updates – Conducted Emergency Operations Plans (EOP) update seminars for each county in the CSEPP footprint (10 counties) and followed up with individual county meetings to move forward the update of County EOP's into the new Emergency Support Function format.

New Madrid Seismic Zone Earthquake Resource Assignment Workshop – Developed and conducted the first ever national catastrophic event resource assignment workshop where 8 states and their federal partners validated needs, assigned resources and identified real gaps in the support for a major earthquake along the New Madrid Seismic Zone.



KYEM Training and Exercise Section

The mission of **KYEM's Training and Exercise Section** is to develop a world class training delivery system and exercise evaluation program that will prepare emergency management personnel at all levels to support the overall mission of protecting the citizens and assets of the Commonwealth of Kentucky during natural or man-made disasters as well as other large scale emergencies and special events.

During FY2010-11, KYEM hosted and/or otherwise supported 142 classes which provided much-needed emergency management training to 3,942 adults across the Commonwealth. Concerted and coordinated efforts to improve relations within the various EM disciplines resulted in more robust sections and greater participation in class offerings and exercise opportunities. KYEM's training and exercise calendar is available online (KYEM.ky.gov).

KYEM and the Commonwealth's active participation, leadership and coordination during the National Level Exercise 2011/New Madrid Seismic Zone Earthquake Exercise were among the highlights of training and exercise activities during FY2010-11. Participation by the White House, Governor's Office and more than 10,000 schools, businesses, agencies and individuals—representing virtually every community in each region of the state—generated a level of excitement and involvement that is unparalleled in the history of national level exercises.

Another highlight of the year was the globally attended 2010 World Equestrian Games (WEG), which took place in Kentucky from September 25th through October 10th. KYEM's involvement in the planning and execution of emergency preparedness in the months leading up to these internationally recognized events were the culmination of more than a year of hard work in conducting training and exercise workshops designed to provide effective WEG training to a variety of local, state and federal partnering agencies.



WEG Training Workshop



**Commonwealth Emergency
Response Commission (CERC)**

In Kentucky, the **Commonwealth Emergency Response Commission (CERC)** is known as the Kentucky Emergency Response Commission (KyERC) and formerly known as the State Emergency Response Commission (SERC). The CERC may have up to 25 members who are appointed by the Governor. The director of KYEM serves as the Chairperson for the CERC.

Other members include, but aren't limited to the: executive director of the Commission on Fire Protection Personnel Standards and Education or the executive director's designee, representatives of the Department for Environmental Protection, the Office of the State Fire Marshal, Kentucky State Police, the Office of the Attorney General, affected industry, local government, health services, environmental interests and other persons who have technical expertise in the emergency response field as the Governor deems appropriate. Members of the CERC are appointed by the Governor for a term of two (2) years.

CERC members serve until their successors are qualified and appointed. Members are eligible for reappointment.

The CERC currently has the following five subcommittees: Grant Committee, Emergency Planning and Response Committee, Hazardous Material Management Committee, Education and Training Committee and Policy and Advocacy Committee.



The CERC meets quarterly and meetings are open to the public. In an effort to encourage participation, meetings are held at various locations across the commonwealth.

KYEM External Affairs

KYEM continues efforts disseminating information through new social media avenues such as Facebook, Twitter and YouTube, while maintaining more traditional methods such as press releases, media advisories and division announcements to the public, state, local and federal partners and elected officials.

The official website of KYEM, www.kyem.ky.gov, continues its' metamorphosis to be more "user friendly" and serve as a more useful tool and public resource during disasters. Disaster specific pages assist the general public and elected officials while providing emergency and recovery information links and resources. Additional program specific pages have also been added.

Social media has become the fastest growing worldwide communication trend in recent history and KYEM has fully embraced its use by creating multiple pages. As well as a main KYEM Page, KYEM has dedicated Facebook pages for the following programs: Training and Exercises, Search and Rescue, Hazard Mitigation, Commonwealth Emergency Response Commission, Private Sector Working Group, Kentucky Weather Spotters and Earthquake Program. KYEM also has a robust Twitter account which was used during the NLE 2011, interacting with Followers using daily exercise messages, as was a dedicated NLE Facebook Group.



KYEM has taken the first steps into the social media video world by posting public safety messages on You Tube. Moving forward, we see a bigger opportunity for video usage.

The KYEM Protector newsletter provides information and articles pertaining to emergency management and emergency services. Articles are welcomed and solicited from partners from across the Commonwealth and at the federal level as well.

New this year was a monthly communication called "The Director's Notes", highlighting upcoming events and messages from the director. This communication, as well as the newsletter, is distributed freely through various channels, to include email distribution, website, social media sites and directly to other agencies for sharing.

Public Awareness

As part of public awareness campaigns, proclamations were issued for Earthquake Awareness Week, Severe Storms Awareness Month, National Preparedness Month and Winter Weather Awareness.

A major public awareness campaign this year was The Great Central U.S. Shakeout, a first ever earthquake preparedness drill that encompassed participation from eleven southeast states with well over **3 million** people practicing the “Drop, Cover and Hold on” earthquake safety drill on April 28, 2010. Kentucky had **357,833** registered participants.

The National Level Exercise presented another excellent opportunity to engage the public and outside organizations. A dedicated page was added to the KYEM Website and a KYEM NLE Facebook Group and Twitter account were established for the exercise. Approximately **2,500** citizens participated on a daily basis and were awarded certificates of participation.

Public Service Announcements (PSAs)

The KYEM Awareness Team continues to provide theme based monthly series of PSAs, to county emergency management directors to assist their community outreach. The PSAs are also published on the KYEM website for use, as well.

Shared Public Photos

Another successful attempt to engage the public is the use of shared public photos. KYEM has established a Picasaweb account which allows the public to upload, download and share photos of events and incidents.



Crisis Communications

From an operational perspective, KYEM’s Public Information Officer (PIO) maintains the ongoing effort to build strengthened crisis communications capabilities by engaging PIOs from other cabinets and partnering agencies. Partnering PIOs have contributed through tabletop discussions and participated in joint exercises.

In support of two presidentially declared disasters, the KYEM PIO integrated into the FEMA Joint Field Office (JFO) Joint Information Center (JIC) representing the State regarding public messaging and notices.

The use of a virtual Commonwealth Joint Information Center (CJIC) proved very effective during past disasters and exercises. The virtual CJIC allows multiagency participation during emergency dissemination of information and situational awareness while maintaining business as usual at their home agency.



Chemical Stockpile Emergency Preparedness Program

CSEPP was created in 1985 when US Congress passed a law directing the Army to dispose of its aging chemical weapons inventory with maximum protection of the public and environment as its primary consideration. The primary goal of CSEPP is to educate and enhance emergency preparedness in communities surrounding the chemical stockpile stored at the Bluegrass Army Depot located in Richmond, Kentucky. The CSEPP footprint consists of Clark, Estill, Fayette, Garrard, Jackson, Jessamine, Laurel, Madison, Powell and Rockcastle Counties.

CSEPP is overseen by the director of KYEM, however, is directly managed by the Operations Branch Manager. KYEM/CSEPP staff consists of a branch manager, public information officer, financial officers, training staff, planner, IT specialists, audit specialists and logistics officer.

KYEM/CSEPP is responsible for administering and oversight of the federal grant received from DoD and FEMA down to the local CSEPP communities. Each CSEPP county has a designated CSEPP director (or EM) who is responsible for that county's CSEP program. CSEPP is governed by an Integrated Process Team (IPT) who meet quarterly to discuss and vote on issues within the CSEPP community. The IPT is comprised of each county CSEPP/EM, KYEM director or state CSEPP manager and federal partners.

CSEPP communities are some of the best prepared EM agencies in the Commonwealth. Primarily, this is possible due to the approximate \$12 million annual budget. CSEPP funding encompasses exercise and training, medical, personal protective and shelter equipment and public information. The CSEPP annual budget, coupled with additional CSEPP grant awards provided to KYEM/CSEPP and its communities, is responsible for many EM improvements, thereby allowing state and local emergency management to better prepare for and respond to emergencies. Such improvements include enhanced or new EOCs (over \$12 million) and communication equipment (over \$7 million) such as sirens and tower upgrades for better interoperability. In FY11, CSEPP has been granted an additional \$2 million to purchase mobile and portable radios, consoles, repeaters and other associated equipment to ensure the communities are P25 compliant.

Public information is a key tool in preparing citizens who surround the chemical stockpile to "know what to do" in the event of a chemical stockpile accident. CSEPP preparedness initiatives include a yearly calendar, pamphlets, emergency preparedness booklets, commodities, school programs and CSEPP displays at county fairs. CSEPP was granted \$500,000 for a multi-media campaign in FY11. These key

CSEPP preparedness initiatives, in addition to an all-hazards approach, help the public better prepare for any type of emergency.

Training also plays a key role in CSEPP. The CSEPP training program is considered one of the most thorough processes of its kind. Last year alone, 562 emergency responders were trained in Moulage, TCTC, Haz Mat Awareness, Haz Mat Operations, DECON, ICS 100-200-300-400-700-800, Medical Simulation Response, Hospital Command and Hospital All-hazards.



Each October, a federally evaluated CSEPP exercise occurs in Kentucky in which the CEOC and each CSEPP County EM division participate along with the Bluegrass Army Depot. During this exercise, DECON, sheltering operations, triage, local agencies such as: police, fire departments, schools, hospitals and other state agencies all play together through a scenario, to practice and enhance their skills and knowledge should a chemical event occur at the Depot.

In 2010, the CSEPP exercise was moved to June in order to accommodate the World Equestrian Games held in October in Lexington. Emergency management resources were simply not available to hold the caliber of exercise CSEPP conducts and also be available for the WEG, should an incident occur and require emergency response. The June 2010 CSEPP exercise encompassed over 190 federal evaluators from Kentucky and other CSEPP states.

The Year in Review (Highlights)

The term “emergency management” is not a stagnate term, indeed, gauging from the activity during the reporting period it could very well be an action term. Three major presidentially declared disasters, two major exercises, the World Equestrian Games, a national workshop, three statewide workshops, statewide preparedness drills, governor preparedness proclamations and not to mention almost 5,000 reported incidents.

Recap of Declared Disasters

DR-1925 Beginning on July 17, 2010 and continuing through July 30, 2010, severe storms, flooding, and mudslides impacted the Commonwealth. The counties of Carter, Elliott, Lewis, Madison, Pike and Shelby were declared eligible for Public Assistance. Individual and Households Assistance was declared for Carter, Elliott, Lewis, Mason, Pike and Rowan counties.

DR - 1976 On April 12, 2011 through May 20, 2011, severe storms, tornadoes, and widespread flooding occurred throughout much of the Commonwealth. On May 4, 2011, a Presidential declaration was received, which ultimately provided Public Assistance for seventy-six (76) counties and individual assistance for twenty-two (22) counties, as well as hazard mitigation grant funding opportunities for the entire state.

DR - 4008 During the period of June 19-23, 2011 severe storms, tornadoes, and flooding occurred in the counties of Bell, Breathitt, Knott, Knox, Lee, Magoffin and Perry. This event was granted a Presidential declaration after the reporting period and on July 25, 2011 allowed only for public assistance in these counties. Eventually individual assistance was awarded for Bell, Knott and Perry Counties.

*More detailed information on these declared disasters is found in the Recover Branch section of this report.

Kentucky Emergency Services Conference (KES) – September 2010

Once again KYEM assisted Kentucky Emergency Management Association during the annual Kentucky Emergency Services Conference by providing 145 unduplicated students 1266 training hours, for an average of 9 hours of training per day per attendee. Leaders in emergency services were given the opportunity to network and brainstorm moving forward. The KES banquet offered the opportunity for several to be recognized and awarded by their peers for a job well done.

World Equestrian Games – October 2010

The World Equestrian Games (WEG) was held at the Kentucky Horse Park from September 25 to October 10, 2010. Although intelligence did not anticipate a major incident to occur, it was necessary for the Commonwealth of Kentucky be prepared for a response. Since the event involved many local jurisdictions, a coordinated effort was needed to prepare for the national event.

Attendance ranged from 20,000 to 40,000 daily. Roughly 800 horses and 1,000 riders participated.

KYEM was a key partner ready to respond to a mass casualty event. KYEM and the National Guard were poised for transportation and logistical support, air space control, air support services, communication support, and coordination and deployment of state wide and federal assets. Prior to the event, KYEM also held a series of multi-partner tabletop exercises on topics such as emergency mass evacuation, a hazmat spill, food-borne illness outbreak, civil disturbance, severe weather event, and a mass equine casualty event. Planning was coordinated with Region 13/14 HPC preparing itself for a WEG response by reviewing surge plans and ensuring local hospitals were ready to coordinate the implementation of their surge plans, if necessary.

Overall the WEG was a huge success for Kentucky, both from a public showcase and preparedness model. Participants, including federal observers, noted that planning for and executing this response showed exemplary cooperation among federal, state and local partners.

Resource Allocation Workshop, Nashville TN – November 2010

The National Emergency Management Association (NEMA), FEMA, and CUSEC (KYEM Director John Heltzel, Sitting Chair) sponsored a Resource Allocation Workshop November 30-December 3 in Nashville, TN. Leading up to National Level Exercise 2011, which is based on a New Madrid Seismic Zone (NMSZ) earthquake, the workshop sought to improve planning for a catastrophic event similar to the earthquakes of 1811-1812. In breakout sessions, each state was asked to identify available resources and recognized shortfalls for key points of discussion and future consideration built into catastrophic planning.

Kentucky Winter Weather Workshop – November 2010

Held November 19 and 20 at the Carroll Knicely Conference Center, Bowling Green, KY. , the workshop's purpose was to raise awareness of Severe Weather situations, network with agencies and weather experts in order for members to better informed and trained and introduce the *Kentucky Weather Spotter Program*. The intended Audience included weather spotters, emergency managers, weather experts, state and local officials.



Kentucky Winter Weather Workshop attendees were treated to two days of dynamic speakers that included Dr. Greg Forbes of The Weather Channel and Bruce Thomas of Midland radio Corp.

179 unduplicated students received a total of 694 training certificates.

County EM Director's Workshop – Jan 17, 2011

KYEM brought together 110 out of 120 Kentucky counties emergency managers for a one day workshop at the Capital Plaza Hotel in Frankfort, KY. Emergency managers were briefed on current programs, statewide initiatives and several breakout sessions. Each attending emergency manager was presented a KYEM pin from Director Heltzel.

Fayette County Emergency Director, Pat Dugger, receives a KYEM pin from John Heltzel



Private Sector Working Group



Private Sector Working Group NLE Workshop – Feb 21, 2011

Seizing the momentum generated from lessons learned from the 2009 Ice Storm and other more recent disasters, KYEM is partnering with the private sector to create more resilient and robust communities.

In fact Kentucky has become the standard for other states to follow.

CEOC Annex Building Construction Planning

Planning and design began in earnest for the new CEOC annex facility adjacent to the current historic structure. Partial funding made available from CSEPP and EOC grant through a KOHS/Hal Rogers Congressional earmark.

Communications Exercise (COMEX)

Friday and Saturday April 1-2, 2011, and as part of the NLE, Monday through Thursday May 16-19, 2011, the COMEX was held at Boone National Guard Center Frankfort in KY.

All public safety agencies participated in a communications exercise on the first weekend of April and during the full National Level Exercise (NLE) conducted May 16th through May 20th. The KY National Guard (KyNG) and KYEM hosted a mobile communications capability “Rodeo” on Friday and Saturday for public safety agencies at Boone National Guard Center. Amateur Radio and Military Auxiliary Radio were exercised from the EOC in April and May. Agencies with mobile command vehicles, communications vehicles, trailers and any other portable deployable communications system deployed to Boone National Guard Center for a major interoperability exercise.

The COMEX was a huge success and served to strengthen communication, interoperability and collaboration across the commonwealth.

COMEX Highlights included:

<p>COMEX Public Safety Events:</p> <ul style="list-style-type: none"> • DMARCS – Department of Military Affairs Radio Communications System Test. All jurisdictions that have a DMARCS MOU and compatible and programmed VHF P-25 radios communicated with the EOC. Test results were published. • Public Health Light Squared Satellite System Test. • The CEOC performed a roll call of the satellite systems in the 24 Western KY Counties defined in the exercise plan and the CUSEC states. • State Agency Interoperability Test. The CEOC participated in an interoperability Test conducted by the KY State Police using the national interoperability channels. • Telephone, Email and WebEOC were tested. • FEMA FNARS Radio Test with Region IV and CUSEC states was successfully tested on both dates. • A major highlight of the Public Safety exercise was the deployment of a P25 Digital Suitcase Repeater in a Civil Air Patrol Aircraft on two days. The repeater provided clear communications on VHF from as far west as Paducah all the way back to the EOC. 	<p>COMEX HAM and MARS Events:</p> <ul style="list-style-type: none"> • VHF and UHF ARES Plan Channels were tested extensively on all dates. • The EOC acted as net control for two major High Frequency HF Kentucky Emergency Nets (KEN) using ARES and MARS published plan Frequencies. Fifty eight (58) stations communicated with the EOC from ALL of the Kentucky state ARES regions. To restate, we had true statewide communications with every region. • The EOC tested a newly installed RMS Pactor Digital HF station • VHF-UHF Relay Test was conducted from Western Kentucky. • The EOC station was operated on all days of the exercises and handled 281 messages including 64 Kentucky Counties, all of the CUSEC States, FEMA, TSA, and one contact in Russia. • The highlight of both HAM / MARS Exercises was the deployment of a dual band VHF/UHF repeater in a state aircraft. • Clear communications were conducted from as far west as Madisonville back to the EOC. Multiple stations also used the system to conduct radio communications from Elizabethtown to Paducah.
---	--

The Great Central U.S. Shakeout – April 29, 2011

The Great Central U.S. ShakeOut involved more than **3 million** people through a broad-based outreach program, partnership with the media and public advocacy by hundreds of partners. This event was organized by the Central United States Earthquake Consortium and its member states. The ShakeOut was centered around a simultaneous “Drop, Cover, and Hold On” drill held at 10:15 AM CDT on April 28, 2011. The 2011 ShakeOut drill was the largest earthquake preparedness event in central U.S. history. In total, **357,826 Kentuckians** registered for the Shakeout with **204** schools in Kentucky participating.

National Level Exercise 2011 – May 16 – 20, 2011

After 24 months of catastrophic operations planning and 18 months of exercise planning, the National Level Exercise 2011 (NLE 2011) took place in mid May.

NLE 2011 simulated the catastrophic nature of a major earthquake in the central United States region of the New Madrid Seismic Zone (NMSZ). The year 2011 is the bicentennial anniversary of the 1811 New Madrid earthquake, for which the NMSZ is named. NLE 2011 was the first NLE to simulate a natural hazard.

NLE 2011 activities took place at command posts, emergency operation centers and other locations to include federal facilities in the Washington D.C. area and federal, regional, state, tribal, local and private sector facilities in the eight member states of the Central United States Earthquake Consortium (CUSEC). The eight member states of CUSEC encompass four different FEMA regions: Alabama, Kentucky, Mississippi and Tennessee (FEMA Region IV); Illinois and Indiana (FEMA Region V); Arkansas (FEMA Region VI); and Missouri (FEMA Region VII).

Ongoing natural disasters in Kentucky and neighbor states limited the participation level of activity and caused several states to drop out completely. However, under the leadership of Governor Beshear Kentucky participated full scale while managing a presidentially declared disaster.

Through a comprehensive evaluation process, the exercise assessed response and recovery capabilities both nationally and regionally. The exercise was designed to validate the following capabilities:

- Communications
- Critical resource logistics and distribution
- Mass care (sheltering, feeding and related services)
- Medical surge
- Citizen evacuation and shelter-in-place
- Emergency public information and warning
- Emergency operations center (EOC) management
- Long term recovery

Highlights of the NLE:

- Day One over 10,000 alert notifications were sent and acknowledged online
- Over 2,500 citizens participated on a daily basis and were awarded certificates of participation – thus expanding awareness and preparedness across the Commonwealth
- Daily AARs were submitted by citizens and emergency officials
- Joint Air Ops
- Search and Rescue Joint Task Force moved into impacted areas to test capabilities
- Infrastructure Tier I and II named areas of interested were physically inspected

- Region User Defined Common Operating System utilized, as FEMA gathered and displayed stats on a common board.
- Governor Beshear hosted a Commonwealth Cabinet meeting at the EOC during the exercise to highlight the event
- Video teleconference with the White House and President Obama
- Recognized the importance and role of the Private Sector
- Reinforced the KY National Guard liaison efforts
- Tested resource allocation and movement capabilities
- Tested and identified emergency communication (equipment and applications)
- Citizen involvement/awareness
- Refined the NMZ Response Plan

NLE take aways:

- The need and importance of mutual aid – Kentucky has been awarded a grant to build a intrastate mutual aid model
- Need of regional Search and Rescue teams
- Interaction with senior elected and agency officials

Resolution Needs:

- Systems and tools
- Process and procedures standardization
- Incident Management Teams
- Citizen surge capacity
- Long term recovery support
- Perhaps the most important take away was the understanding among senior elected officials and emergency officials the difference between response and catastrophic response and the impact upon our society.

A complete NLE 2011 After Action report is in development and will be available for view online and SharePoint.

-end-

